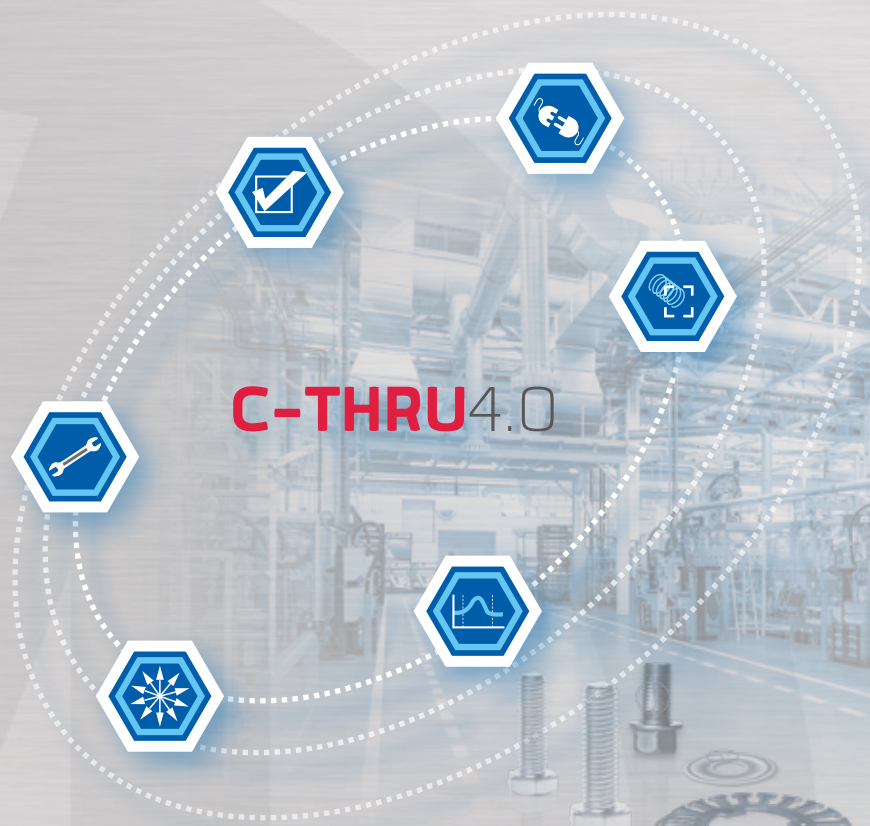


BRANKAMP

C-THRU4.0

*THE SOFTWARE SUITE FOR THE
DIGITALIZATION OF METAL FORMING*



MARPOSS

C-THRU4.0

C-THRU4.0

...IS THE UNIQUE INTERCONNECTION BETWEEN PRODUCTION MACHINE, PROCESS MONITORING AND PRODUCTION MANAGEMENT

Your benefits

- ⊕ Order login and logout directly at the monitoring device possible
- ⊕ Reduce set-up and downtimes
- ⊕ Optimize cycle times
- ⊕ Increase machine utilization
- ⊕ Document and evaluate process data

MARPOSS modular MES software enables via network a direct link between a production machine, its process monitoring system or data collection terminal and the production management and overarching ERP systems. It delivers on-line machine-, operating-, order-, maintenance-, quality- and process data without delay to all departments of the company.

C-THRU4.0 provides the basis for comprehensive, immediate production information, well-founded analysis of the production process with targeted optimization measures along the production chain (heading, threading etc.) – from preventive maintenance, process optimization and quality assurance to resource planning.

C-THRU4.0 manages plants, departments and machine groups which are equipped with BRANKAMP process monitoring systems or data collection terminals. Relevant production information (like order status, machine speed, scrap percentage etc.) are always available. The suite is a key step on the way to managing all resources in the production process. Recording and evaluation of key figures make productivity, costs and quality transparent and traceable.

Special features

- ⊕ Easy integration of process monitoring devices into C-THRU4.0
- ⊕ Saving and evaluation of process and operating data
- ⊕ Input terminals for all machines in the production line
- ⊕ Production data inputs directly at the process monitoring device
- ⊕ Forced input of downtimes reasons possible without process monitoring

Production

- Automatic production data collection via BRANKAMP monitoring devices or input terminals for any type of production machine.
- Variable terminal input – multi-lingual and configurable.
- Planning, execution, supervision and analysis.
- Digital visualization of production processes.
- Order login and logout as well as recording of downtimes precise to the second at the monitoring terminal.

Quality

- Quality controls at the right time – customizable and flexible with automatic recording of measurement results.
- Required activities due to set-up, tool changes or predefined stops will be triggered automatically.
- Connection to external CAQ systems like Quarta EVO.

Maintenance

- User friendly, preventive, corrective.
- Minimize machine downtimes by means of clever planning and prevention.
- Record all maintenance activities, spare parts consumption, duration and costs.

Batch Recording

- Document the use of your material batches completely and traceably.
- In the case of missing batch release, the machine can be locked if desired.
- Complete proof of the batch used per order.

Process

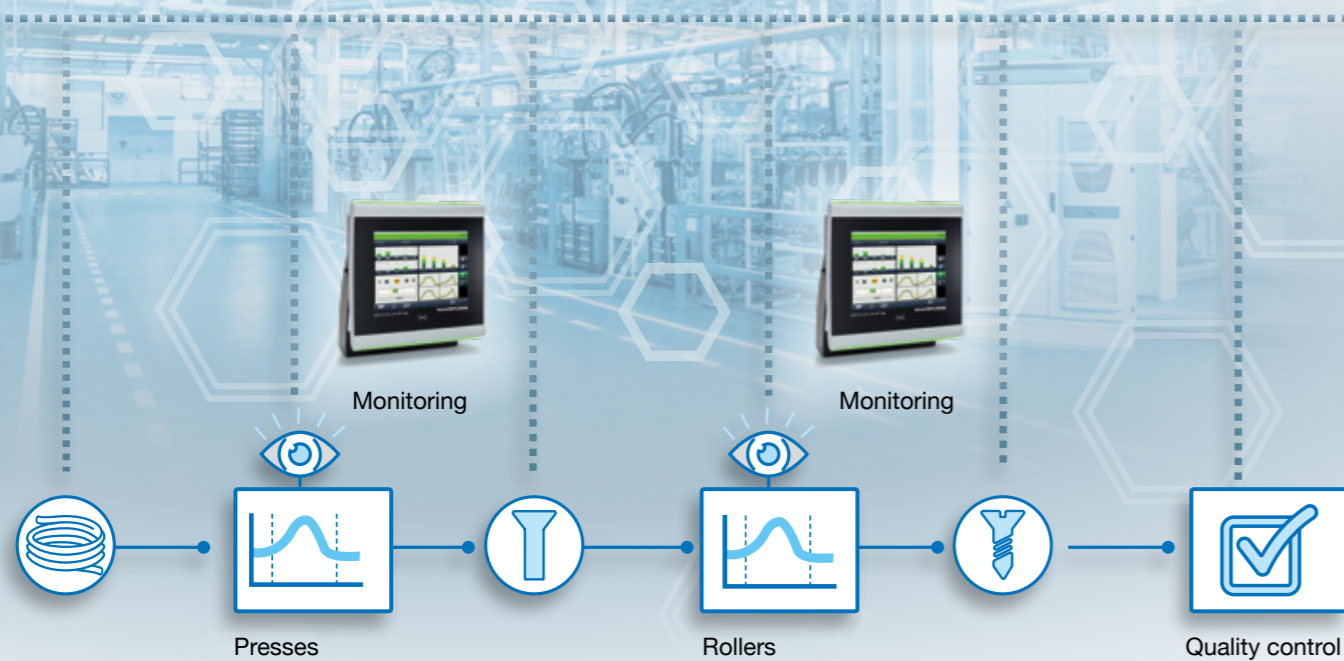
- Live view of single process parameters or of entire production lines.
- Optimization and monitoring of important process parameters.
- Automatic process recording of process parameters enabling the analysis of stops, tool wear and other process events.

Energy Management

- Energy consumption recording according to DIN-ISO 50001.
- Various recording options for all common types of energy, e.g. electricity, compressed air or gas.
- Allows detailed analyses of consumption behaviour and provides direct approaches for savings potentials.

ALL DATA RESOURCES CENTRALLY LINKED AND AVAILABLE AT ANY TIME

C-THRU4.0



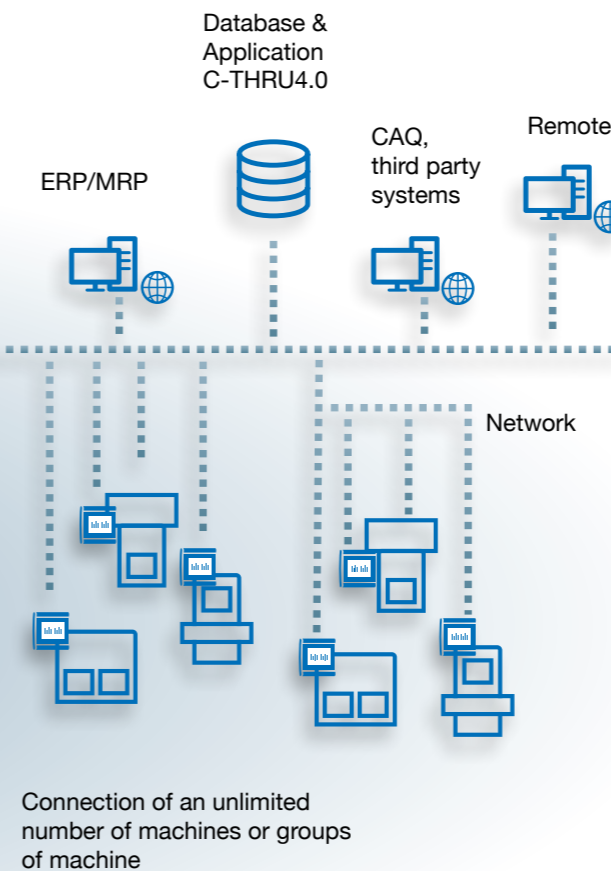
OPTOFLASH - the latest in optical measurement technology

The Optoflash is extremely useful in fastening, automotive, aerospace and medical industries, with the capability to perform 100 static measurements in 2 seconds at $U95 = 1 \mu\text{m} + D/200$ (D in mm).

Quality management system software

Quarta EVO is a CAQ system that allows you to manage and track all steps in your quality management system. In particular, the Statistical Process Control (SPC) is an excellent tool to avoid problems during the production process. The Quarta EVO SPC module not only provides planning, control and evaluation, but also serves as a comprehensive analysis tool for the entire operational quality management.

quarta EVO



Features

The direct interconnection with process monitoring provides the production planning with well-founded and detailed information which is not available to conventional production control systems. The interconnection supports the automatization of workflows, automated report generation, the identification of stop reason, the minimization of set-up times and the optimal planning of intervals for orders or maintenance.

- Production costs and quality are always transparent and traceable through the statistical recording and evaluation of key performance indicators
- Individual reports improve the overview
- Process-related data are documented without gaps as a basis for time and cost optimization
- Free programmable warning alarms indicate immediately deviations and bottlenecks and inform the responsible employees automatically.
- The MES system is the elementary component in the digitalization of production in the environment of industry 4.0.

YOUR BENEFITS WITH C-THRU4.0

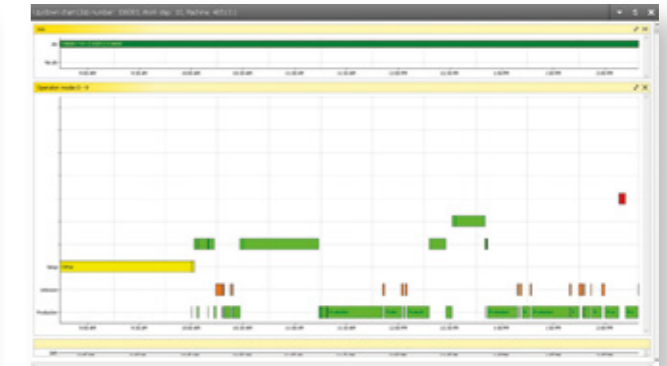
- Bundle your production and process key figures and make them available at any time
- Monitoring of production times, processes, quality as well as available and required resources
- Make your complete production workflow visible
- Depict the flow of information in
- Real time: various production key figures such as the analysis of the Overall Equipment Efficiency (OEE) are available with just one click
- Data collection functions are directly integrated in all X-series monitoring devices
- Due to the modular design, a quick and easy entry into the digitalization of production is possible
- Quick and flexible support from experts with remote access to monitoring devices



Machine overview



Reports



Runtime behaviour of the machine



Dashboards



Downtime analysis



X7



X5



X3S



X1

C-THRU4.0



T1

The T1 input terminal for machines without process monitoring.

All process monitoring units in the X-series have an MES-interface.

THE MACHINE'S HARDWARE



www.marposs.com

For a full list of address locations, please consult the Marposs official website

ODN6B11EN01 - Edition 04/2023 - Specifications are subject to modifications.
© Copyright 2023 MARPOSS Monitoring Solutions GmbH (Germany) – All rights reserved.

BRANKAMP, MARPOSS and Marposs product names/signs mentioned or shown herein are registered trademarks or trademarks of Marposs in the United States and other countries. The rights, if any, of third parties on trademarks or registered trademarks mentioned in the present publication are acknowledged to the respective owners.

Marposs has an integrated system for Company quality, environmental and safety management, with ISO 9001, ISO 14001 and OHSAS 18001 certification. Marposs has further been qualified EAQF 94 and has obtained the Q1-Award.



www.brankamp.com